

Prices 2019

In the Garni Haus Sonnleitn you can open a new chapter of recreation. Enjoy calmness, relaxation in the temperate swimming pond and time for resting at extensive reading lessons.

INCLUDED SERVICES:

- breakfast
- mini fridge, safe, cable TV
- in-house sauna
- outdoor program at the Waldhof, e.g. biking, hiking and bike rental
- reduced green fee at the GC Waldhof
- golf try-out course
- discounts on barge and carriage rides

Gourmet package

You want to enjoy all Waldhof services? Treat yourself to some relaxation and recreation and book the full gourmet programme. The package depends on availability and is bookable in advance for the entire duration of your stay per room, or during your remaining holiday.

ADDITIONAL INCL. SERVICES:

- spa & wellness including our entire Waldhof Sauna and Water World
- lunch snack and afternoon cake buffet
- different 6-course-dinner every day
- all Waldhof outdoor and indoor activities,

Almrausch

Apartment (living and bed room separated), bathtub/toilet (partly separated), located southeast, approx. 45m², balcony



Gänseblümchen

Single room, bathroom with bathtub/toilet, on the lake side, approx. 25m², balcony



Glockenblume

Double room, bathroom with bathtub/toilet, south side, approx. 23m², balcony



Löwenzahn

Double room, bathroom with bathtub/toilet, east side, approx. 26-30m², balcony



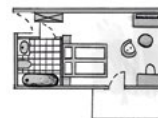
Sonnenblume

Apartment, double sofa bed, bathroom with bathtub/toilet, south side, lake view, approx. 38m², balcony



Lavendel

Double room, on the lake side, bathroom with bathtub/toilet, 31-34m², double sofa bed, balcony



Ebner-Eschenbach

2-room suite, living room "Swiss pine", tiled stove, bath and shower, handicapped accessible, approx. 50m², south side with a terrace



	From 7 nights		Sun-Fri		Fri-Sun, holidays	
	bed and breakfast	incl. gourmet package	bed and breakfast	incl. gourmet package	bed and breakfast	incl. gourmet package
Almrausch	98,-	166,-	105,-	177,-	110,-	188,-
	79,-	146,-	83,-	155,-	88,-	164,-
Gänseblümchen	86,-	160,-	91,-	170,-	96,-	178,-
	67,-	141,-	71,-	149,-	75,-	157,-
Glockenblume	73,-	141,-	77,-	150,-	81,-	158,-
	55,-	124,-	58,-	131,-	62,-	139,-
Löwenzahn	71,-	139,-	75,-	148,-	79,-	156,-
	53,-	122,-	56,-	129,-	59,-	137,-
Sonnenblume	88,-	162,-	93,-	172,-	98,-	180,-
	69,-	143,-	73,-	151,-	77,-	159,-
Lavendel	86,-	160,-	91,-	170,-	96,-	178,-
	67,-	141,-	71,-	149,-	75,-	157,-
Ebner-Eschenbach	109,-	177,-	113,-	187,-	123,-	197,-
	90,-	156,-	95,-	165,-	100,-	174,-

Prices: All prices plus € 1,50 local taxes are per person and night based on an occupation of two persons in a double bedroom or one person in a single bedroom including breakfast. The sketches of rooms shown are non-binding!

Arrival and departure: Check-in is from 3pm and checkout is possible until 11 am. The check-in counter is located at the Waldhof entrance. Late checkout has to be arranged with the reception for an additional charge.

Children: We would like to dedicate the Garni Haus Sonnleitn to those who are seeking peace and quiet. With your children we would be happy to welcome you in one of our other houses in Ebner's Waldhof.

Contact: Ebner's Waldhof Garni Haus Sonnleitn
Seestraße 4, 5330 Fuschl am See, Austria
T +43 6226 8405
reservierung@sonnleitn-fuschl.at, www.sonnleitn-fuschl.at

KEY

Peak season

7.7.2019 - 31.8.2019

Low season

18.4.2019 - 6.7.2019
1.9.2019 - 3.11.2019